

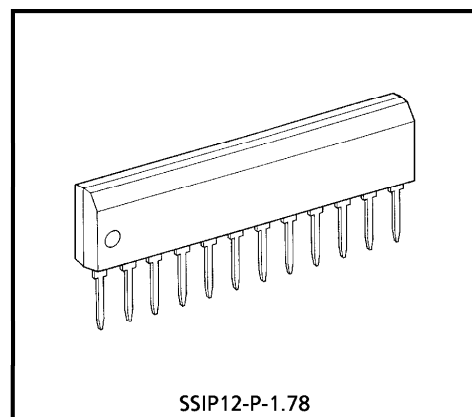
TOSHIBA BIPOLAR LINEAR INTEGRATED CIRCUIT SILICON MONOLITHIC

TA8721ASN

DUAL SIF SYSTEM FOR TV

FEATURES

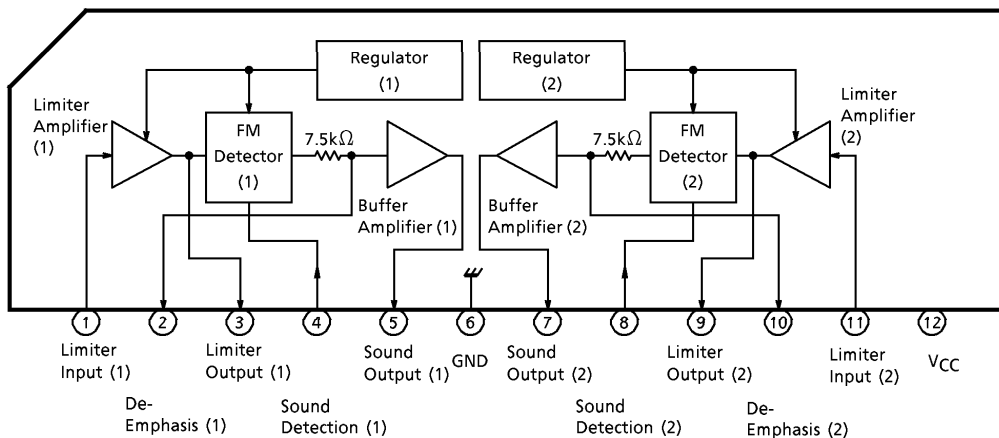
- Two channel SIF circuit (The 2ch demodulation circuit can be configured in combination with the TA8712N or TA8796N.)
- Three stage limiter amplifier
- Quadrature type detection circuit
- No-adjustment type FM detector circuit by ceramic discriminator



SSIP12-P-1.78

Weight : 0.71g (Typ.)

BLOCK DIAGRAM



961001EBA2

- TOSHIBA is continually working to improve the quality and the reliability of its products. Nevertheless, semiconductor devices in general can malfunction or fail due to their inherent electrical sensitivity and vulnerability to physical stress. It is the responsibility of the buyer, when utilizing TOSHIBA products, to observe standards of safety, and to avoid situations in which a malfunction or failure of a TOSHIBA product could cause loss of human life, bodily injury or damage to property. In developing your designs, please ensure that TOSHIBA products are used within specified operating ranges as set forth in the most recent products specifications. Also, please keep in mind the precautions and conditions set forth in the TOSHIBA Semiconductor Reliability Handbook.
- The products described in this document are subject to foreign exchange and foreign trade control laws.
- The information contained herein is presented only as a guide for the applications of our products. No responsibility is assumed by TOSHIBA CORPORATION for any infringements of intellectual property or other rights of the third parties which may result from its use. No license is granted by implication or otherwise under any intellectual property or other rights of TOSHIBA CORPORATION or others.
- The information contained herein is subject to change without notice.

TERMINAL FUNCTION

| PIN No. | PIN NAME | FUNCTION | INTERFACE CIRCUIT |
|---------|---|--|-------------------|
| 1 | Limiter Input (1) | A sound carrier is input from SAW filter. | |
| 2 5 | De-Emphasis (1) Sound Output (1) | The De-Emphasis time constant is defined by external capacitor. This is an FM detector circuit output terminal. | |
| 3 4 | Limiter Output (1) Sound Detection (1) | This is a connection terminal of sound detection coil. This will be of no-adjustment type by using ceramic discriminator. A sound muting will be performed by connecting pin 4 to GND. | |
| 6 | SIF GND | Connect a bypass capacitor between this pin and SIF V _{CC} of pin 12. | — |

| PIN No. | PIN NAME | FUNCTION | INTERFACE CIRCUIT |
|---------|---|---|-------------------|
| 7 10 | Sound Output (2) De-Emphasis (2) | This is an FM detector circuit output terminal. The De-Emphasis time constant is defined by external capacitor. | |
| 8 9 | Sound Detection (2) Limiter Output (2) | This is a connection terminal of sound detection coil. This will be of no-adjustment type by means of ceramic discriminator. A sound muting will be performed by connecting pin 8 to GND. | |
| 11 | Limiter Input (2) | A sound carrier is input from the SAW filter. | |
| 12 | SIF V _{CC} | Connect a bypass capacitor between this pin and SIF GND of pin 6. | — |

MAXIMUM RATINGS (Ta = 25°C)

| CHARACTERISTIC | SYMBOL | RATING | UNIT |
|-----------------------|-----------------------|----------|------|
| Supply Voltage | V _{CC} | 15 | V |
| Power Dissipation | P _D (Note) | 890 | mW |
| Operating Temperature | T _{opr} | - 20~75 | °C |
| Storage Temperature | T _{stg} | - 55~150 | °C |

(Note) When using the device at above Ta = 25°C, decrease the power dissipation by 7.14mW for each increase of 1°C.

RECOMMENDED SUPPLY VOLTAGE

| PIN No. | PIN NAME | MIN. | TYP. | MAX. | UNIT |
|---------|-----------------|------|------|------|------|
| 12 | V _{CC} | 8.1 | 9.0 | 9.9 | V |

ELECTRICAL CHARACTERISTICS

DC CHARACTERISTICS (Unless otherwise specified V_{CC} = 9V, Ta = 25°C)

| CHARACTERISTIC | SYMBOL | TEST CIR-CUIT | TEST CONDITION | MIN. | TYP. | MAX. | UNIT |
|------------------|-----------------|---------------|----------------|------|------|------|------|
| Supply Voltage | I _{CC} | 1 | — | 13 | 18 | 23 | mA |
| Terminal Voltage | V ₁ | 1 | — | 2.7 | 3.0 | 3.3 | V |
| | V ₂ | | — | 4.1 | 5.1 | 6.1 | |
| | V ₃ | | — | 2.7 | 3.7 | 4.7 | |
| | V ₄ | | — | 2.3 | 2.9 | 3.6 | |
| | V ₅ | | — | 3.5 | 4.5 | 5.5 | |
| | V ₇ | | — | 3.5 | 4.5 | 5.5 | |
| | V ₈ | | — | 2.3 | 2.9 | 3.6 | |
| | V ₉ | | — | 2.7 | 3.7 | 4.7 | |
| | V ₁₀ | | — | 4.1 | 5.1 | 6.1 | |
| | V ₁₁ | | — | 2.7 | 3.0 | 3.3 | |

AC CHARACTERISTICS (When using the specified coil unless otherwise specified, $V_{CC} = 9V$, $T_a = 25^\circ C$)

| CHARACTERISTIC | SYMBOL | TEST CIR-CUIT | TEST CONDITION | MIN. | TYP. | MAX. | UNIT |
|--|---------------------|---------------|---|----------|------|------|------------|
| Audio Frequency Output Level (Note 1) | V_{OD1} | 2 | $f_o = 4.5MHz$, $V_i = 100dB\mu V$ | 350 | 500 | 700 | mV_{rms} |
| | V_{OD2} | | $f_o = 4.724MHz$, $V_i = 100dB\mu V$ | 350 | 500 | 700 | |
| Audio Frequency Distortion Rate (Note 2) | THD1 | 2 | $f_o = 4.5MHz$ | — | 0.2 | 1.0 | % |
| | THD2 | | $f_o = 4.724MHz$ | — | 0.2 | 1.0 | |
| Limiting Sensitivity (Note 3) | V_{LIM1} | 2 | When output V_{OD1} is $-3dB$. | — | — | 50 | $dB\mu V$ |
| | V_{LIM2} | | When output V_{OD2} is $-3dB$. | — | — | 50 | |
| AMR (Note 4) | AMR1 | 2 | $f_o = 4.5MHz$, $AM = 30\%$ | 40 | 50 | — | dB |
| | AMR2 | | $f_o = 4.724MHz$, $AM = 30\%$ | 40 | 50 | — | |
| Audio Frequency Bandwidth (Note 5) | AFBW1 | 2 | $-3dB$ bandwidth | ± 70 | — | — | kHz |
| | AFBW2 | | $-3dB$ bandwidth | ± 70 | — | — | |
| S/N Ratio (Note 6) | S/N1 | 2 | $f_o = 4.5MHz$, CW against FM 25kHz/dev | 60 | — | — | dB |
| | S/N2 | | $f_o = 4.724MHz$, CW against FM 25kHz/dev | 60 | — | — | |
| Crosstalk Between Sound Outputs (Note 7) | CR1 | 2 | SIF1 $f_o = 4.5MHz$, $f_m = 400Hz$ SIF2 $f_o = 4.724MHz$, CW | 60 | — | — | dB |
| | CR2 | | SIF1 $f_o = 4.5MHz$, CW SIF2 $f_o = 4.724MHz$, $f_m = 400Hz$ | 60 | — | — | |
| Limiter Input Resistance (Note 8) | R_{i1} , R_{i2} | 2 | — | 0.75 | 1.0 | 1.25 | $k\Omega$ |

TEST CONDITION

(Note 1) Audio Frequency Output Level

Limiter input

 V_{OD1} : $f_o = 4.5MHz$, $100dB\mu V$, $f_m = 400Hz$, 100% (25kHz/dev) FM modulation V_{OD2} : $f_o = 4.724MHz$, $100dB\mu V$, $f_m = 400Hz$, 100% (25kHz/dev) FM modulation

After the above input, measure the output level of sound output.

(Note 2) Audio Frequency Distortion Rate

Measure the distortion rate of sound output by distortion meter under the condition of note 1.

(Note 3) Limiting Sensitivity

Limiter input

 V_{LIM1} : $f_o = 4.5MHz$, variable level, $f_m = 400Hz$, 100% (25kHz/dev) FM modulation V_{LIM2} : $f_o = 4.724MHz$, variable level, $f_m = 400Hz$, 100% (25kHz/dev) FM modulationAfter the above input, measure the output level of sound output. Measure the input level of note 1 output level at $-3dB$.

(Note 4) AMR

Limiter input

AMR1 : $f_o = 4.5\text{MHz}$, $100\text{dB}\mu\text{V}$, $f_m = 400\text{Hz}$, 30% AM modulation

AMR2 : $f_o = 4.724\text{MHz}$, $100\text{dB}\mu\text{V}$, $f_m = 400\text{Hz}$, 30% AM modulation

After the above input, measure the output level of sound output. (AMout)

Calculate the ratio of the output level of note 1.

$$\text{AMR} = 20\log \frac{\text{AMout}}{V_{\text{OD}}}$$

(Note 5) Audio Frequency Bandwidth

Limiter input

AFBW1 : f_o variable (center 4.5MHz), $100\text{dB}\mu\text{V}$, $f_m = 400\text{Hz}$, 100% (25kHz/dev) FM modulation

AFBW2 : f_o variable (center 4.724MHz), $100\text{dB}\mu\text{V}$, $f_m = 400\text{Hz}$, 100% (25kHz/dev) FM modulation

After the above input, measure the output level of sound output. Calculate the frequency width when the output level of note 1 becomes -3dB by changing the f_o frequency high and low.

(Note 6) S/N Ratio

Limiter input

S/N (1) : $f_o = 4.5\text{MHz}$, $100\text{dB}\mu\text{V}$ CW

S/N (2) : $f_o = 4.724\text{MHz}$, $100\text{dB}\mu\text{V}$ CW

After the above input, measure the output level of sound output (S/N out). Calculate the ratio of the output level of note 1.

$$\text{S/N} = 20\log \frac{V_{\text{OD}}}{\text{S/N out}}$$

(Note 7) Cross Talk between sound outputs

Limiter input

CR1 : $\left[\begin{array}{l} \text{SIF1 } f_o = 4.5\text{MHz}, 100\text{dB}\mu\text{V}, f_m = 400\text{Hz} \\ \text{SIF2 } f_o = 4.724\text{MHz}, 100\text{dB}\mu\text{V}, \text{CW} \end{array} \right.$

CR2 : $\left[\begin{array}{l} \text{SIF1 } f_o = 4.5\text{MHz}, 100\text{dB}\mu\text{V}, \text{CW} \\ \text{SIF2 } f_o = 4.724\text{MHz}, 100\text{dB}\mu\text{V}, f_m = 400\text{Hz} \end{array} \right.$

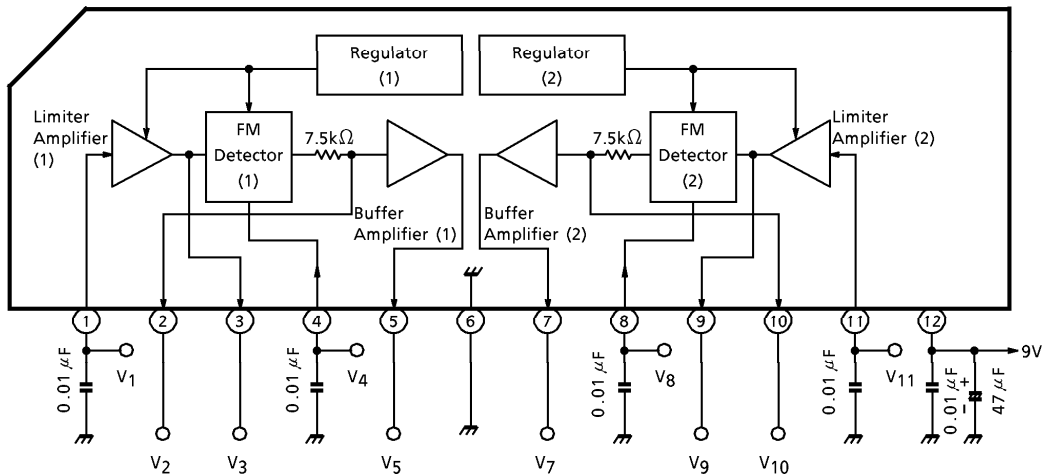
After the above input, measure the output leakage level of sound output.

$$\text{CR1 (2)} = 20\log \frac{\text{SIF 1 (2)}}{\text{SIF 2 (1)}}$$

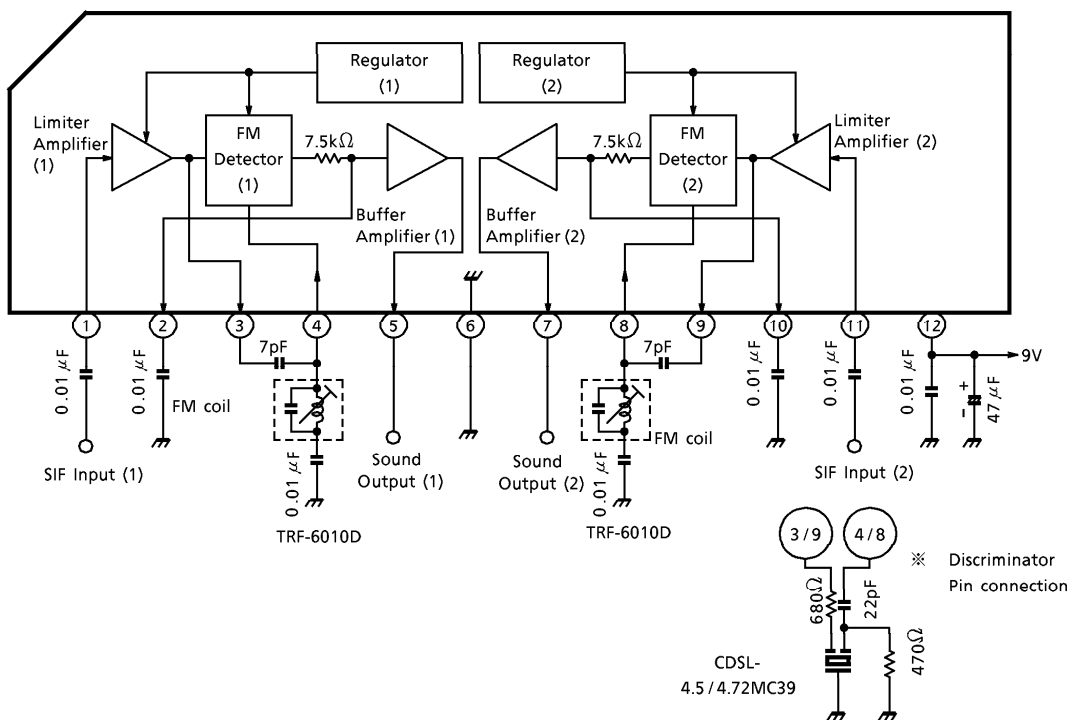
(Note 8) Limiter input resistance

Measure the resistance of limiter input terminal by impedance analyzer.

TEST CIRCUIT 1
DC characteristics



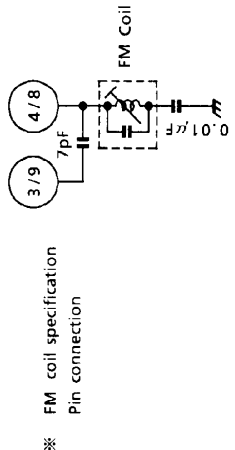
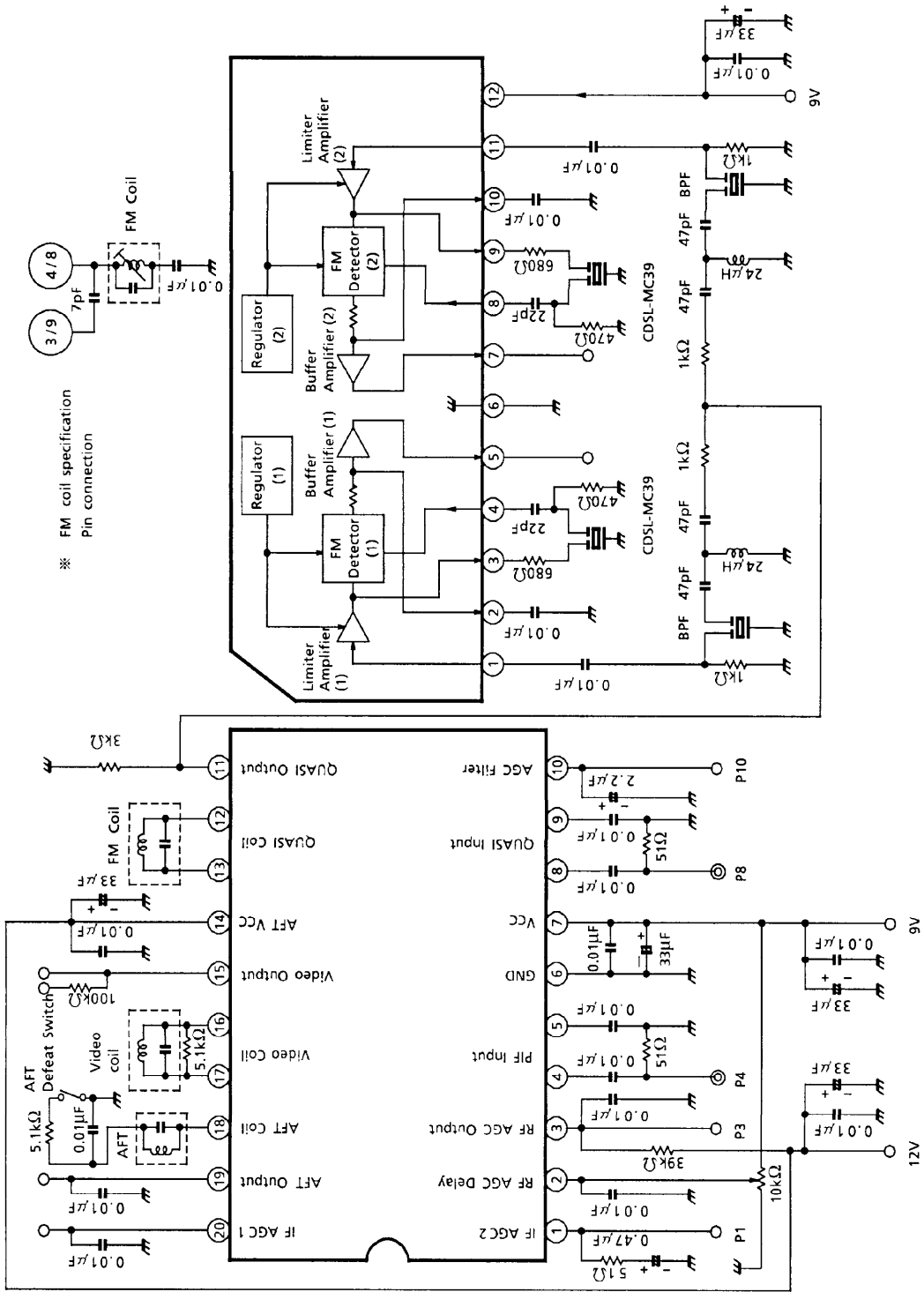
TEST CIRCUIT 2
AC characteristics



APPLICATION CIRCUIT

TA8721ASN

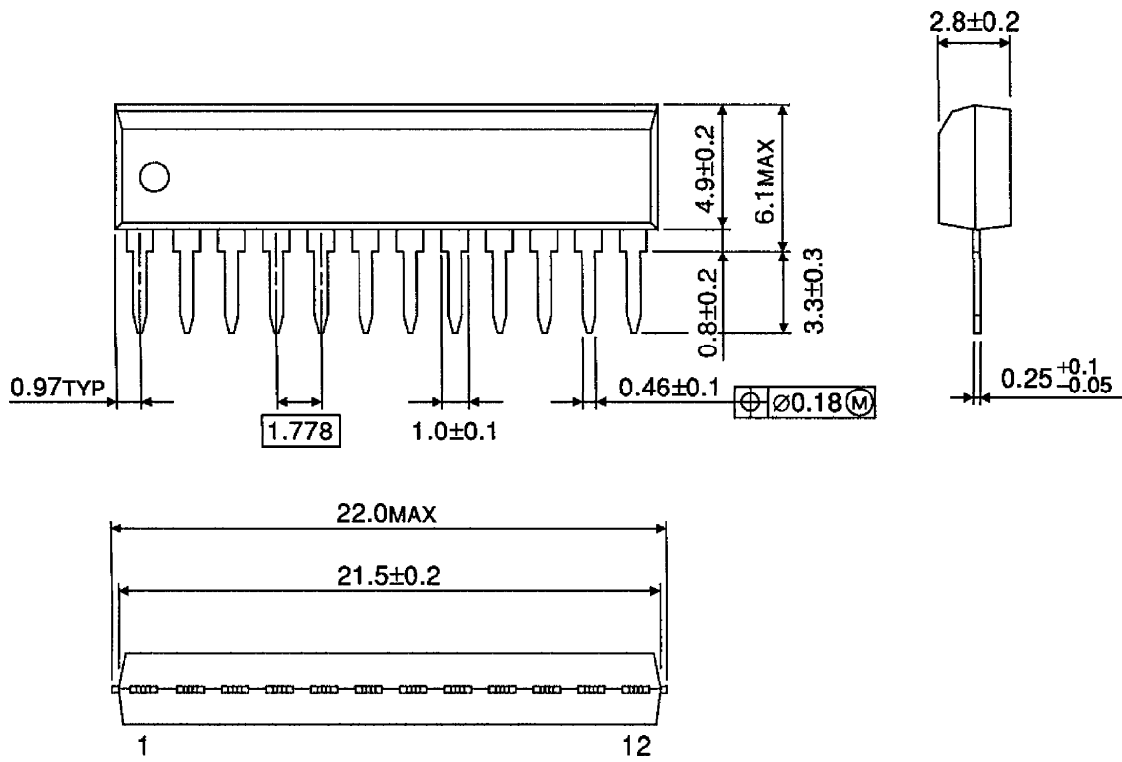
TA8712N/TA8796N



※ FM coil specification
Pin connection

OUTLINE DRAWING
SSIP12-P-1.78

Unit : mm



Weight : 0.71g (Typ.)